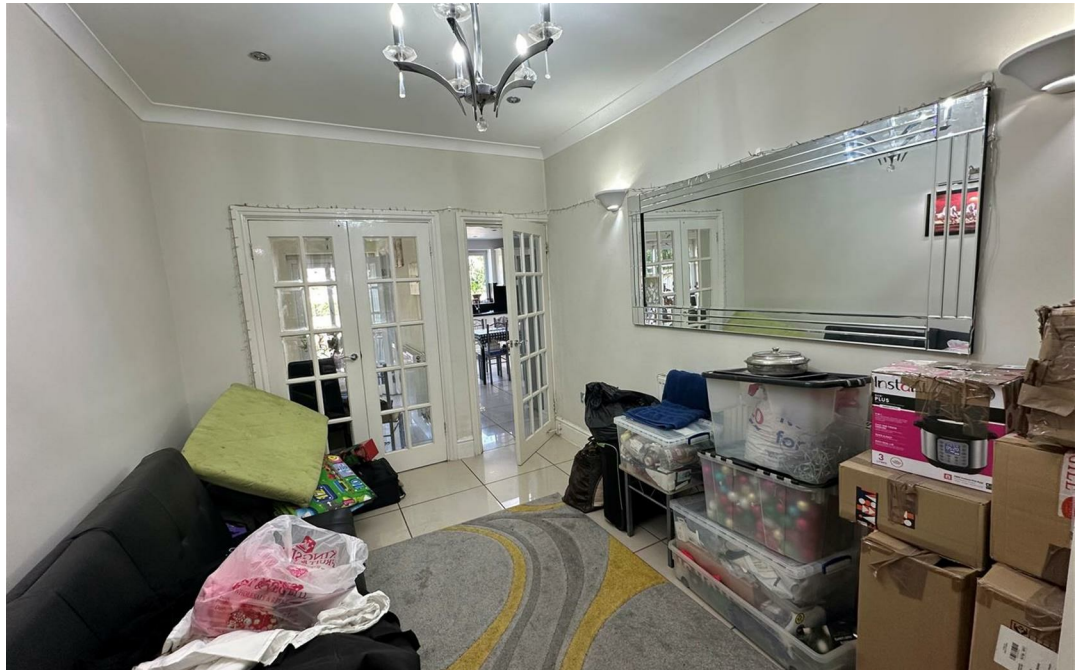


Ashcombe Gardens, Edgware HA8

**£3,500 Per
Month**



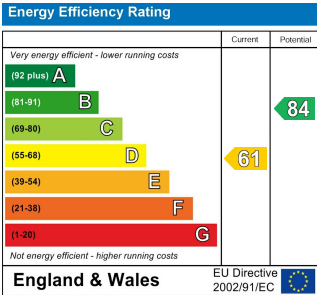


- 4 BEDROOM HOUSE
- 2 BATHROOMS

- EXCELLENT LOCATION
- PRIVATE DRIVEWAY

- AVAILABLE FROM SEPTEMBER 2025
- COUNCIL TAX BAND G & EPC RATING D

A spacious 4 bedroom house to let in this superb location close to shops, schools and transport links. Including a large through lounge / diner, kitchen and breakfast room, utility and storage, guest WC, 2 bathrooms, well maintained gardens and a private driveway. Available from early September 2025.



ABC Hendon Sales
020 8203 4567

